

# Man's Lace Scarf Pattern - By Joe Wilcox

## Materials:

Needles: US3 (3.25 mm)

Yarn: Approximately 585 Yards (535 Meters) of Fingering Weight Yarn  
(The pictured scarf was made with 3 balls of Crystal Palace Mini Mochi in color 104)  
2 Stitch Markers

## Finished Measurements

8" wide x 64" long (approximately)

## Knitting Instructions:

On US3 (3.25 mm) needles, cast on 72 stitches

Work 7 repeats of the Lace Rib pattern stitch:

Row 1: (K2, P5) repeat to last 2 sts and K2

Row 2: (P2, K5) repeat to last 2 sts and P2

Row 3: Repeat Row 1

Row 4: (P2, K2tog, YO, K1, YO, SSK) repeat to last 2 sts and P2

## Foundation Row:

K2, P5, Place Stitch Marker, (K8, K2Tog) 5 times, K8, Place Stitch Marker, P5, K2

## Body of The Scarf - Stitch Pattern

Row 1 (wrong side): Continue Lace Ribbing Stitch Pattern for the first 7 sts to stitch marker, P to next stitch marker, complete last 7 sts of Lace Ribbing Stitch Pattern.

Each row will continue the Lace Ribbing Stitch Pattern for the first and last 7 sts and the main body stitch pattern will be worked over the sts between the Stitch Markers. The main body stitch pattern for all odd rows will be purl stitches, except for rows 5 and 13 as noted.

- Row 2 (right side): K1; \*K1, YO, K2tog, YO,(K2tog) 3 times, K2, YO, K3, YO, SSK, YO, K1; rep from \* to last st, K1.
- Row 4: K1; \*K1, YO, K2tog, (K3tog) twice, YO, K1, YO, K2, (SSK, YO) twice, K1; rep from \* to last st, K1. (15 sts)
- Row 5: P1 \*P10, P2tog, P3; rep from \* to last st, P1. (14 sts)
- Row 6: K1; \*K1, YO, K3tog, YO, K3, YO, K2, (SSK, YO) twice, K1; rep from \* to last st, K1. (15 sts)
- Row 8: K1; \*K1, YO, K2tog, YO, K1, YO, K2, SSK, YO, K2, (SSK, YO) twice, K1 rep from \* to last st, K1. (17 sts)
- Row 10: K1; \*K1, YO, K2tog, YO, K3, YO, K2, (SSK) twice, (SSK, YO) twice, K1; rep from \* to last st, K1.
- Row 12: K1; \*K1, (YO, K2tog) twice, K2, YO, K1, YO, (sl 1, K2tog, PSSO) twice, SSK, YO, K1; rep from \* to last st, K1. (15 sts)
- Row 13: P1; \*P3, SSP, P10; rep from \* to last st, P1. (14 sts)
- Row 14: K1; \*K1, (YO, K2tog) twice, K2, YO, K3, YO, (sl 1, K2tog, PSSO), YO, K1; rep from \* to last st, K1. (15 sts)
- Row 16: K1; \*K1, (YO, K2tog) twice, K2, YO, K2tog, K2, YO, K1, YO, SSK, YO, K1 rep from \* to last st, K1. (17 sts)

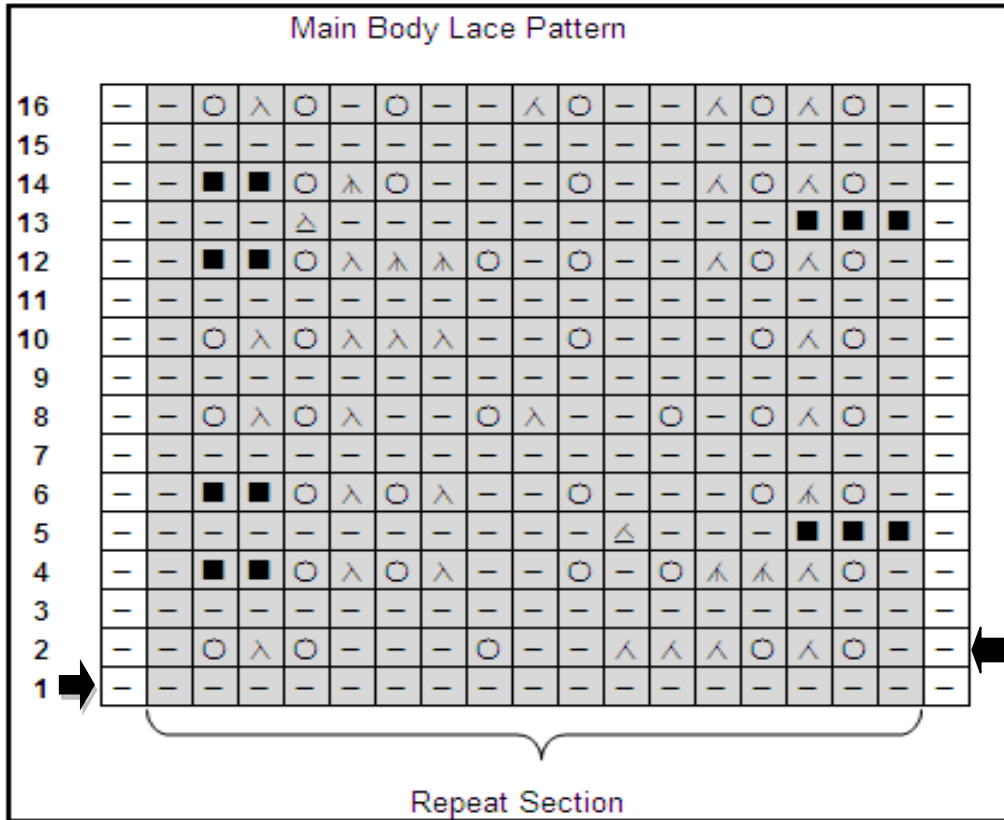
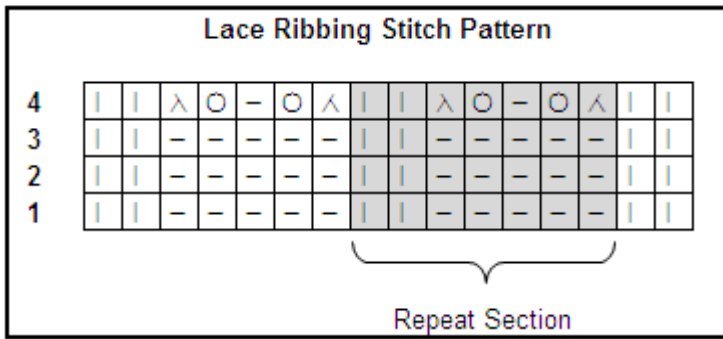
Repeat these 16 rows a total of 30 times

## Foundation Row:

K2, P5, remove Stitch Marker, (P8, M1) 5 times, P8, remove Stitch Marker, P5, K2

Complete the scarf by repeating the Lace Rib stitch pattern 7 times and bind off loosely.





### Symbol Definitions

-	Knit on right side, purl on wrong side
	Purl on right side, knit on wrong side
∧	SSK
∧	Knit 2 together
○	Yarn Over
∧	Knit 3 together
∧	Sl 1, Knit 2 together, pass slipped stitch over
△	Purl 2 together
△	Purl 2 together to back of loop
■	No stitch